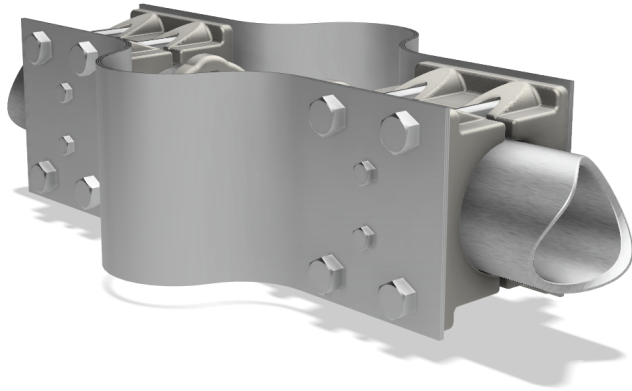


# Bolted Bus Supports

## RX-AL Expansion Type



Type "RX" aluminum expansion bus support has been designed with laminated shunts which will carry the full outdoor rating of S.P.S. Schedule 40 aluminum tubing. Shunt material is pre-tinned copper with each lamination .0113" thick. Laminations are sweated together under pressure to form one-piece pads at each end. Cast parts are #356, heat treated to T-6 temper. All shunts have flex angles permanently set for proper expansion and contraction in the field. Laminations designed for maximum of 2,000 ampere service at 30°C rise. For higher ampere rating, specify at time of order.

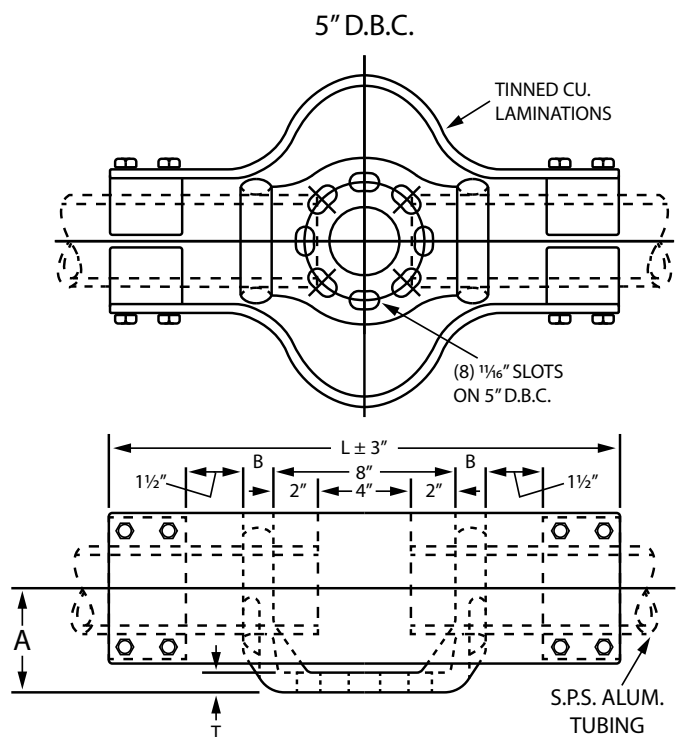
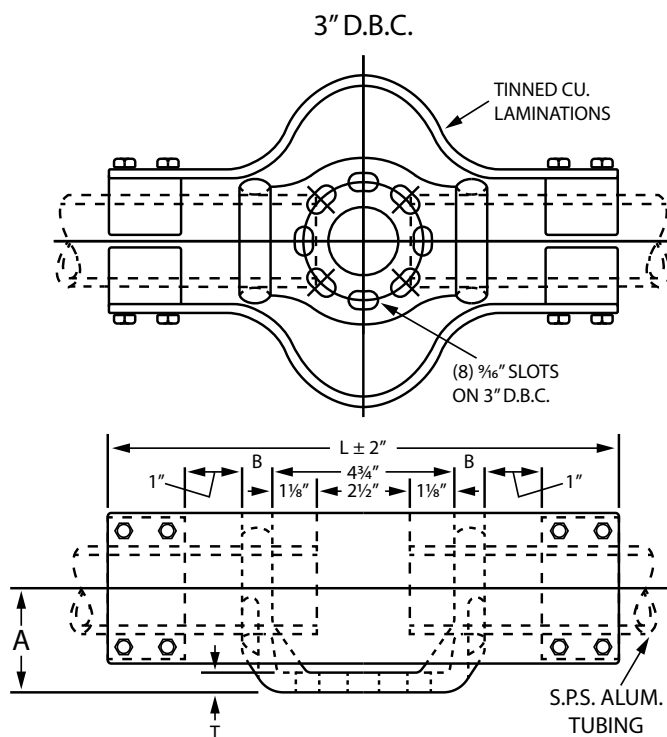


Table on following page.

For cross reference or other  
information, please contact us.  
[deltastarcc.com](http://deltastarcc.com)



**DELTA STAR  
CONNECTOR COMPANY**



# Bolted Bus Supports

## RX-AL Expansion Type

(continued)

S.P.S. SIZE	3" & 5" Bolt-Circle		3" Bolt-Circle		5" Bolt-Circle	
	Dim. In Inches		Catalog	Dim. In Inches	Catalog	Dim. In Inches
	A	B	No.	C	No.	C
3/4"	1 5/8	1 1/4	630813	2	630815	2 3/4
1"	2	1 1/2	630823	2	630825	2 3/4
1 1/4"	2 1/2	1 3/4	630833	2 1/4	630835	3
1 1/2"	3 1/4	2	630843	2 1/2	630845	3 1/4
2"	3	2 1/2	630853	2 1/2	630855	3 1/4
2 1/2"	4 1/2	2 3/4	630863	3	630865	3 3/4
3"	5 1/4	3 1/4	630873	3	630875	3 3/4
3 1/2"	5 1/2	3 3/4	630883	4 1/4	630885	4 1/2
4"	5 3/4	4	630893	4 1/4	630895	4 1/2

For cross reference or other  
information, please contact us.  
[deltastarcc.com](http://deltastarcc.com)



**DELTA STAR  
CONNECTOR COMPANY**

